



DAWN SHADOW
RANGER 36
1977 CLASSIC MOTOR BOAT

DAWN SHADOW

IN JANUARY 2012 DAWN SHADOW WAS TRANSPORTED FROM THE CLYDE IN SCOTLAND TO LYMINGTON HAMPSHIRE.

SHE WAS RE-FITTED OVER THE YEAR AND TAKEN BY SEA TO SOUTH DOCK IN LONDON, AND LATER ON TO BELGIUM WHERE SHE WAS BERTHED UNTIL LATE 2019 IN ANTWERP DAWN SHADOW WAS USED FOR CRUISING IN HOLLAND AND BELGIUM

DUE TO THE DESIGN AND LAYOUT OF THE BOAT SHE MAKES AN IDEAL LIVE ABOARD VESSEL WITH FULL HEADROOM THROUGHOUT.

DAWN SHADOW RETURNED TO LYMINGTON LATE 2019. THE ENGINES SERVICED AND SOME COSMETIC WORK CARRIED BY RIVERBANK MARINE OF LYMINGTON

A SURVEY WAS CARRIED OUT IN 2014 AND IS AVAILABLE AS A PDF .

THE REMEDIAL WORKS DETAILED IN THE SURVEY WERE SUBSEQUENTLY CARRIED OUT PRIOR TO MOVING TO ANTWERP

THE RE- FIT INCLUDED THE FOLLOWING WORKS

ENGINES SERVICE BY DAVE CRAWFORD LYMINGTON
IN 2012

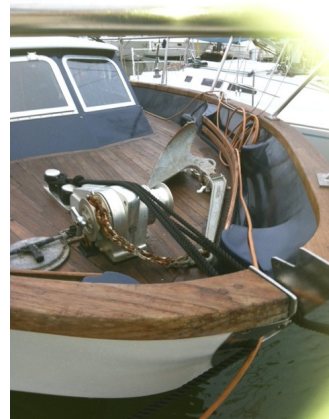
WORKS INCLUDED :-

SERVICING THE INJECTORS
OVERHAULING THE TURBO CHARGERS
REPLACING THE RAW WATER PUMPS
REPLACING THE FRESH WATER PUMPS
REPLACING THE EXHAUST WATER INJECTION ELBOWS
REPLACEMENT OF OIL AND DIESEL FILTERS
ALL OILS CHANGED IN ENGINE AND GEAR BOX
REPLACEMENT OF ANY SUSPECT WATER PIPES
REPLACEMENT OF ANY SUSPECT OIL PIPES

HULL POLISHED AND TWO COATS OF INTERNATIONAL
ANTIFOULING APPLIED



CABIN TOP RE-PAINTED, AND TOPSIDES POLISHED



SONY STERIO / CD PLAYER WITH IPOD CONNECTION
AND 12 VOLT CHARGING SOCKET



TV / CD PLAYER IN SALOON



TV AERIAL & HAND OPERATED SEARCH LIGHT



MAST AND ANCHOR LIGHT WITH HORN



SSP SHAFT SEALS WITH WATER COOLED BEARING & VETUS BULLFLEX ANTI VIBRATION COUPLING, SEA COCKS FOR TOILET STRIPPED AND GREASED



CUTLASS BEARINGS CHECKED, SPURS ROPE CUTTERS FITTED



SALOON SEATS AND TOP OF DASH RE-UPHOLSTERED

NELSON COOKER WITH OVEN,GRILL & TWO RING
BURNER + TYPICAL 13AMP BRASS SSO



WACO 24 VOLT FRIDGE WITH ICE BOX



THREE SELF PARKING SCREEN WIPERS REPLACED

EXTRACT FANS TO GALLEY AND TOILETS WITH LED STRIPLIGHTS



GAS SYSTEM OVERHAULED AND ALDE BUBBLE TESTER FITTED



HEAD LININGS THROUGHOUT REPLACED



24 VOLT LIGHTING SPOTS REPLACED
24 VOLT LED LIGHTING INSTALLED TO CABINS
24 VOLT LED LIGHTING TO BRIDGE

RAYMARINE RL80C CHART PLOTTER & RADAR
RAYMARINE DEPTH SOUNDER & COMPASS



ENGINE SEA COCKS STRIPPED & GREASED



ELECTRIC TRIM TABS AND ANODES REPLACED



THREE BILGE HIGH WATER ALARMS INSTALLED



12/24 VOLT MCB SWITCH PANEL



240 VOLT MCB BOARD WITH RCD UNIT
13 AMP SWITCH SOCKETS THROUGHOUT
SHORE POWER CONNECTION
HOT AND COLD PLASTIC PLUMBING
HOT AND COLD TAPS
SHOWER MIXER TAPS
PUMP OUT TOILET IN AFT CABIN
PUMP OUT TOILET IN FD. CABIN
CORK TILING IN TOILET/SHOWERS

ANODES FOR FRESH AND SALT WATER



24 VOLT DUAL BATTERY CHARGER

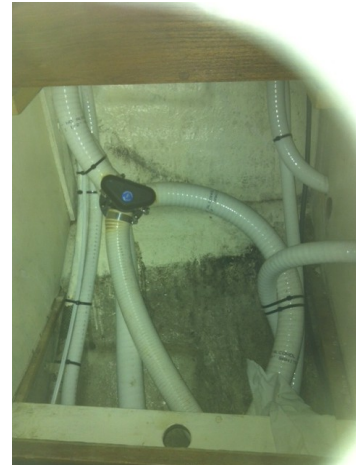


**24/12 VOLT BATTERY CHARGER
FIVE 110 Amp Hour BATTERIES**

**60 GALLON HOLDING TANK FOR FORWARD
TOILET**



BLACK WATER DIVERTER
VALVE FOR DISCHARGE OVER BOARD



DECK PUMP OUT FOR BLACK HOLDING TANK
TEAK DECKS



THERE ARE TWO SHOWERS FORWARD AND AFT

CALORIFIER WITH 240 VOLT IMMERSION HEATER



TWO AUTO FIRE EXTINGUISHERS IN ENGINE ROOM



THERE IS A WEBASTO WARM AIR SYSTEM FOR HEATING
THROUGHOUT THE BOAT